

Product Catalogue for **BLÜCHER® EuroPipe**

Drainage Pipework System



BLÜCHER®

A **WATTS** Brand



Safe solutions

BLÜCHER® stainless steel drainage products are installed in almost any kind of construction project, from multi-storey apartments and food processing factories to hospitals and on board prestigious cruise liners. We have specialised our competencies within four main segments:

Housing

Commercial

Industrial

Marine

The BLÜCHER® drainage system is a modular system providing numerous possible product combinations.

BLÜCHER® Drain

Floor drains for light- to heavy-duty flow and load applications.

BLÜCHER® Channel

Standard, modular or customised channels and kitchen channels for all flow and load applications.

BLÜCHER® EuroPipe

Push-fit drainage pipe-work system for soil, waste and rainwater.

Customised solutions

To ensure that any drainage requirement can be fulfilled we are always ready to solve your special request.

Strong products

All BLÜCHER® drainage products are produced in stainless steel grade AISI 304 or optionally grade AISI 316L. This material is ideally suitable for high-quality drainage systems:

- Fire resistant
- High strength - low weight
- Environmentally friendly

Furthermore it is corrosion resistant, resistant to impacts and thermal stress and requires little maintenance.

In the BLÜCHER® drainage products the inherent qualities of stainless steel are enhanced by careful product design resulting in:

- Long product life expectancy
- Excellent hygienic properties
- Easy installation
- Whole-life cost advantages
- Excellent flow capacities

All BLÜCHER® products are chemically descaled and passivated in order to enhance the natural corrosion resistance and provide a uniform matt-silver surface finish.

All stainless steel components are manufactured from recycled materials and are 100% recyclable.

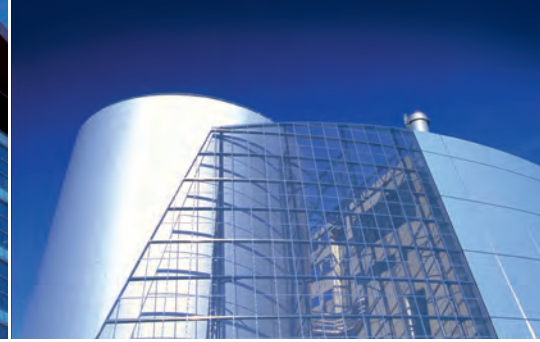
Danish quality

Founded in Denmark in 1965, BLÜCHER has developed into a leading manufacturer of stainless steel drainage systems. Today, BLÜCHER is an international company with subsidiaries and representations worldwide. The BLÜCHER Group employs more than 350 staff worldwide.

Customers all over the World appreciate our know-how, dedicated service and common sense.

Through quality stainless steel products and drainage solutions that lead waste water away, BLÜCHER is committed to the promise of keeping up the flow.

The BLÜCHER® drainage products are manufactured in Denmark using the most modern production methods and in accordance with the internationally recognised quality standard ISO 9001. Furthermore, the most respected classification societies endorse the BLÜCHER® drainage products worldwide.



Selected references around the World

Hospitals, schools, commercial kitchens, the food and beverage industry and the pharmaceutical industry are among the customers that benefit from BLÜCHER stainless steel drainage systems.

Housing

BLÜCHER® stainless steel floor drains and pipe system are used all over the World in Scandinavian-style wet bathrooms in single and multi-storey buildings.

Commercial

Queen Mary Hospital, Hvidovre hospital, Princess Alexandra Hospital, Blackpool Victoria Hospital, Queen Elizabeth Hospital, St. James Hospital, University College London Hospital, Sportcentrum Fitness First, Czàsar Swimming Pool, Sports & Aquatic Centre, International Grammar School, Collège Bellevue, Elite University, Universitat Pompeu Fabra, Augustenborgskolan, Canadian International School, North Texas State University, Elderly Citizens Home Adelaide, Old Peoples Home Budapest, Maryland State Prison, Uppsala Polishus, Oslo Opera, Hilton Hotels, Hotel Marriot, Sofitel, Novotel, The Ritz Carlton Bahrain, McDonalds, Burger King, Pizza Hut, Le Louvre, Bahrain National Museum, Ministère de L'Industri, State Library of Victoria, Royal Danish Theatre, Copenhagen Zoo, Hong Kong Disneyland, Dubai Mall, IKEA, Tesco, Coop, Metro, Carrefour, Lidl, Woolworths, Gardamoen Oslo, Copenhagen Airport, Heathrow Airport, Barcelona Airport, New Athens Airport, Orly Airport, Arlanda Airport, Helsinki Airport.

Industrial

Pfizer, GSK, Astra Zeneca, Johnson & Johnson, Aventis, Kraft, Nestlé, Danish Crown, Daloon, Tulip, Knorr, Singapore Airport Catering, Ahlgreens, Estrella, Kelloggs, CocaCola, Pepsi, Heineken, Carlsberg, Whitbread Breweries, Budweiser, Tropicana Juice Processing, Absolut Vodka, Nestlé, Arla Food, Danone, Unilever, Almarai Dairy, Mercedes, Renault, L'Oreal, Sony, BASF, 3M, IBM World Headquarters, Honeywell, Colgate Palmolive, Royal Copenhagen, Hella.

Marine

Freedom of the Seas, Liberty of the Seas, Norwegian Star, Color Magic, Pride of Hawaii, Galaxy, AIDA Diva, Celebrity Solstice, MY Platinum (Dubai Ports Authority), M/S Caravelle (Jade Yachts), Safari (Blohm & Voss) Lady Haya (Pesaro), Pelorus (Lürssen Kröger Werft), Oceanco Kusch Yachts Agentur, 3 vehicle carriers and 10 container ships (MHI Japan), 6 container vessels (AP Møller), 35 commercial vessels (Mawai China), 24 container vessels (Dalian Shipyards China), Agbami Off Shore, Consafe-Aberdeen Oil Platform Bingo I & Bingo II Offshore Oil Rigs, Auxillary vessel (British Navy), 5 frigates (Norwegian Navy), 2 logistics vessels (Danish Navy), 2 survey vessels Dutch Navy.

The BLÜCHER® range comprises:

BLÜCHER® Drain Domestic



Shower drains for concrete/tiled and vinyl floors

- SQUARE, TRIO and CIRCLE
- Removable and easy-to-clean water trap
- Range of design gratings

WaterLine shower channels for concrete/tiled and vinyl floors

- For installation against wall(s) or away from walls
- Range of design gratings

BLÜCHER® Drain Industrial



Industrial drains for concrete/tiled, resin or vinyl floors

- SQUARE and CIRCLE
- Removable and easy-to-clean water trap
- Large range of gratings for all applications and load classes

BLÜCHER® EuroPipe



Push-fit drainage pipes and fittings, Ø40-Ø315 mm

- Low weight, high strength
- For vacuum and gravity systems
- RS82 renovation system (see separate catalogue)

BLÜCHER® Channel



Channels and kitchen channels for concrete/tiled, resin and vinyl floors

- Removable and easy-to-clean water trap
- Large range of gratings for all applications and load classes

BLÜCHER® HygienicPro



Point and linear drains for applications with strict requirements to hygiene and high capacity, e.g. production areas in the food and beverage industry

- Quickly leads away solid waste, even at small water volumes
- No corners and cavities inside thus preventing bacterial growth
- Less production stops for emptying and cleaning filter baskets

BLÜCHER® Drain Roof



Roof drainage system for single-ply membrane or bitumen in gravity and vacuum systems

- Roof drains and BLÜCHER® EuroPipe pipework system
- Easy installation
- Long product life expectancy

BLÜCHER® product catalogues can be ordered from our customer center or downloaded from www.blucher.com

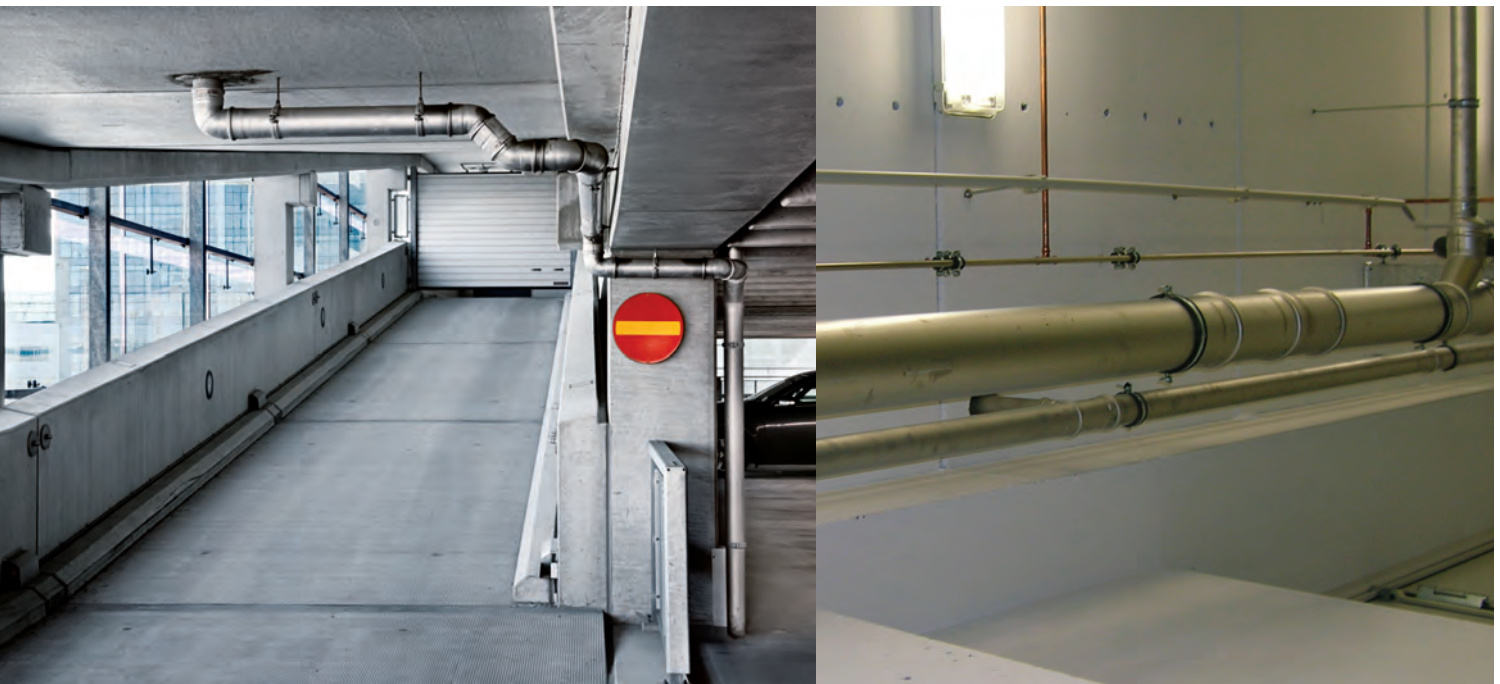


BLÜCHER® EUROPIPE

Presentation of BLÜCHER® EuroPipe - pipes and fittings.	1
Pipes.	4
Fittings - Bends.	7
Fittings - Branches.	11
Fittings - Access pipes and bends.	14
Fittings - Sockets.	15
Fittings - Increases and reducers.	16
Fittings - Adaptors.	17
Fittings - Rat stops.	21
Fittings - Toilet adaptors.	22
Accessories.	24
Pipe cutters and other tools.	31



Pipes and fittings for commercial and industrial applications



Push-fit system
Lightweight
Fire resistant

Applications

- Above or below ground
- Completely interchangeable between vacuum and gravity systems

Details

- Standard dimensions Ø40 - Ø315mm
- Standard lengths 0.15 - 6 metres
- Extensive range of fittings
- Sealing ring included (one sealing ring for gravity and vacuum)
- Stainless steel AISI304/EN 1.4301 or AISI316L/EN 1.4404

Variants

- Range of sealing rings for various applications

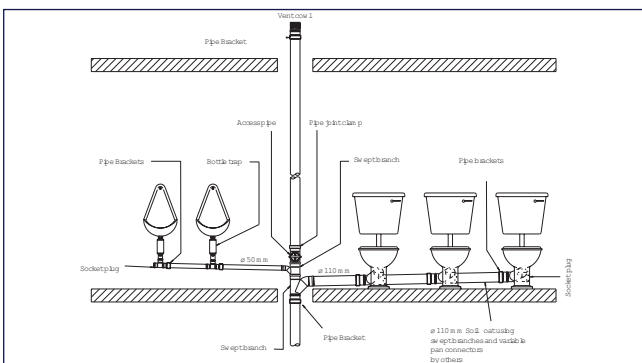
Options

- Range of pipe hangers
- Access pipe with hinged door
- Rat stop
- Electrical or manual pipe cutters

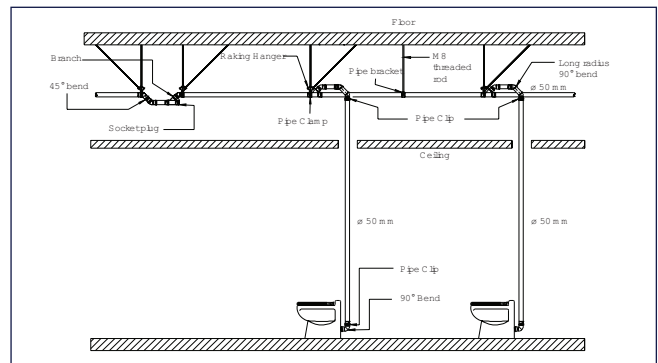
Complete systems

BLÜCHER® EuroPipe system can be used for many purposes - waste-water drainage, rainwater drainage, vacuum-cleaning systems, roof drainage

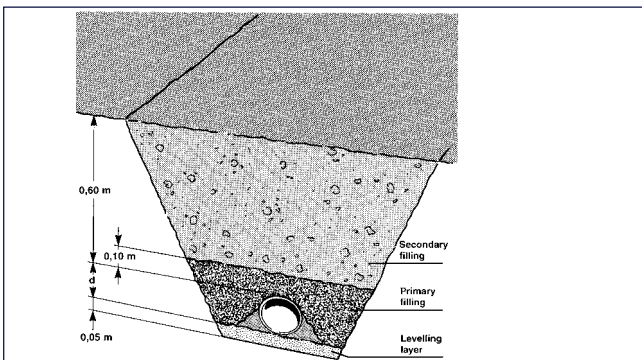
Waste-water drainage system, gravity



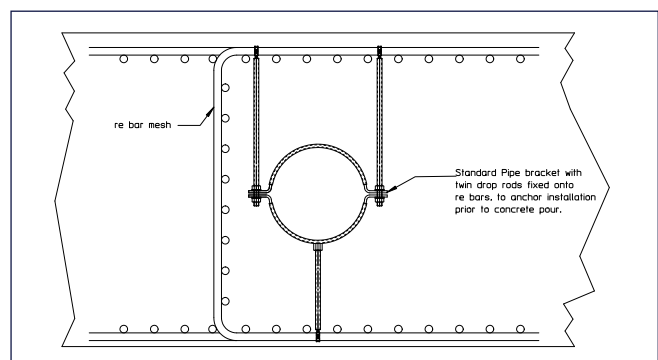
Waste-water drainage system, vacuum



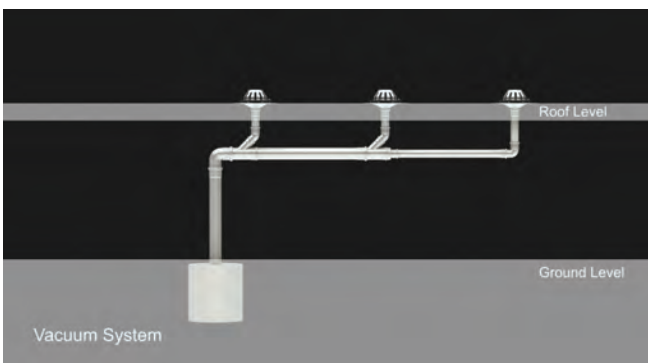
Below ground installation



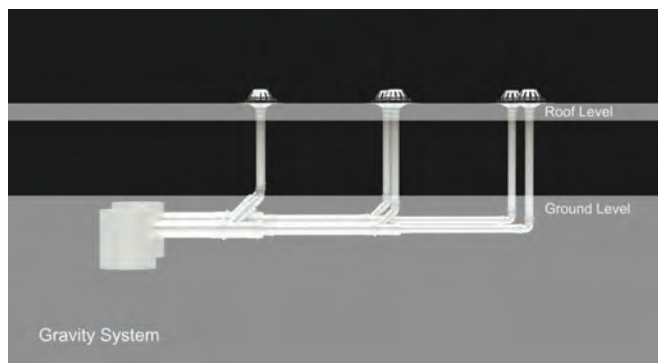
Below ground, pipes cast in raft foundation



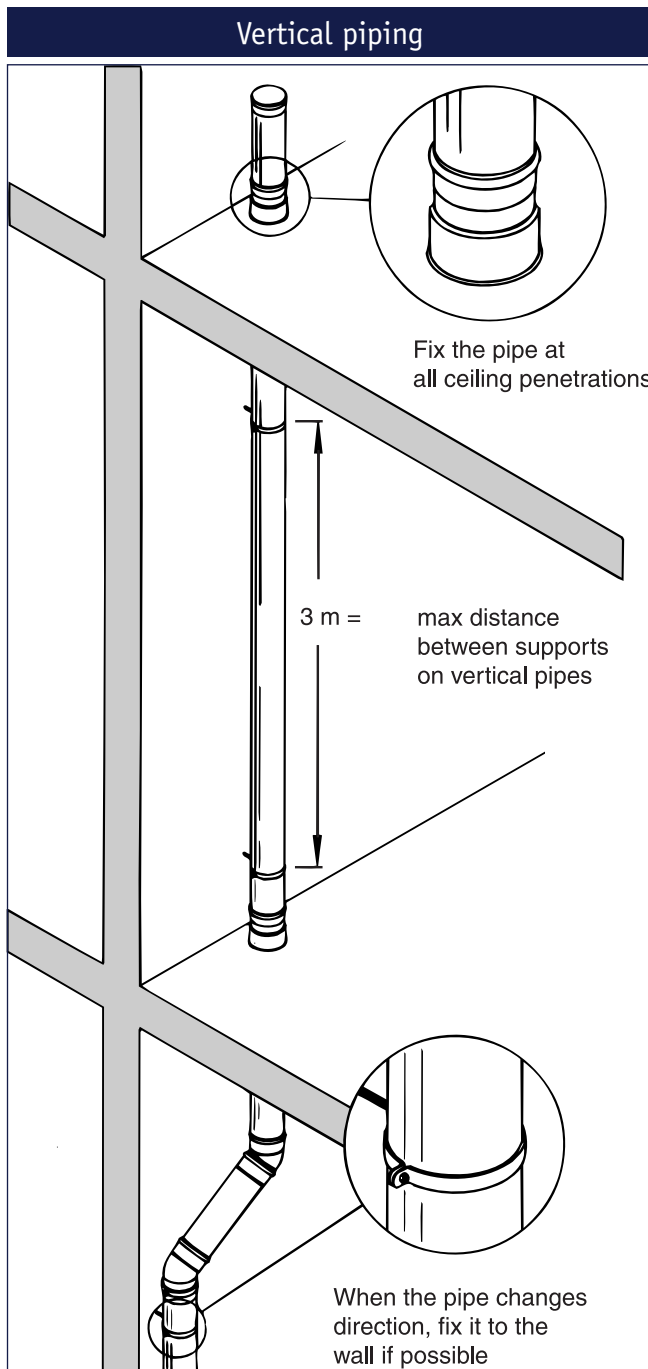
Siphonic rainwater installation



Gravity rainwater installation

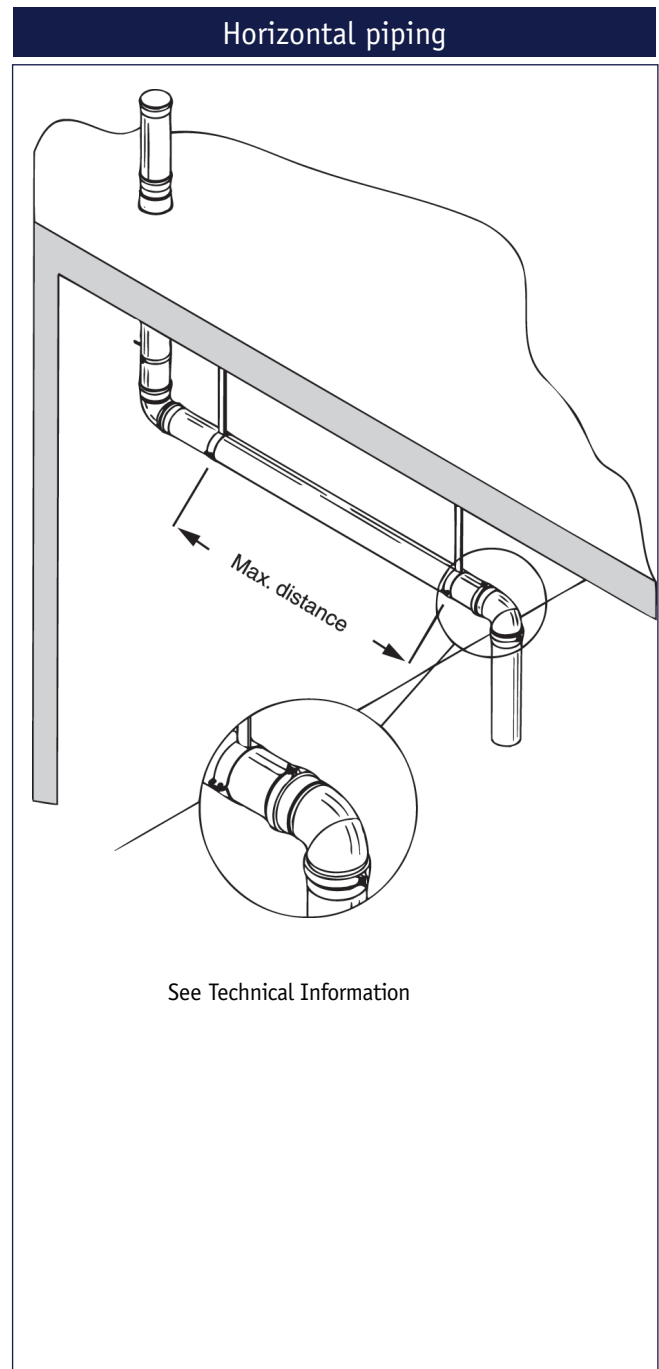


Installation examples



One fixing point per storey is normally sufficient. As opposed to plastic pipes, stainless steel pipes require only one pipe hanger per 3 metres, resulting in less sound and faster installation.

For further specifications and installation advice see the catalogue: "Technical information on BLÜCHER® EuroPipe".

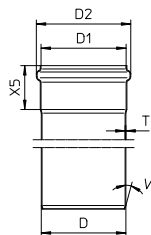


Horizontal pipe runs are always to be installed with a gradient. If no self-cleansing calculation is available, a gradient of 20 ‰ is recommended in gravity systems. Horizontal pipe runs in vacuum systems are to be installed in accordance with the recommendations of the vacuum system supplier.

When connecting major branch lines, the pipe is to be fixed just below the branch line.

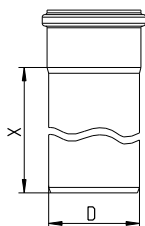
DIMENSIONAL DRAWING, SOCKET AND SPIGOT END

PIPES AND FITTINGS



Type no.	EAN no.	D	D1	D2	X5	T	V (°)
811.XXX.040		40	41	52	41	1	20
811.XXX.050		50	51	61	42	1	20
811.XXX.075		75	76	87	50	1	20
811.XXX.082		82	83	94	52	1	20
811.XXX.110		110	111	123	57	1	20
811.XXX.125		125	126	140	60	1	20
811.XXX.160		160	161	177	72	1.25	20
811.XXX.200		200	201	219	90	1.5	20
811.XXX.250		250	251	277	108	1.5	20
811.XXX.315		315	316	344	116	2	20

STRAIGHT PIPE WITH ONE SOCKET TYPE 811



Type no.	EAN no.	D	X	Kg
811.015.040	5705499412635	40	150	0,20
811.025.040	5705499412659	40	250	0,40
811.050.040	5705499412673	40	500	0,60
811.075.040	5705499412697	40	750	0,78
811.100.040	5705499412710	40	1000	1,02
811.150.040	5705499412734	40	1500	1,50
811.200.040	5705499412758	40	2000	1,99
811.300.040	5705499412772	40	3000	2,96
811.400.040	5705499412796	40	4000	3,92
811.500.040	5705499412819	40	5000	4,89
811.600.040	5705499412833	40	6000	5,86

811.015.050	5705499400205	50	150	0,25
811.025.050	5705499400281	50	250	0,38
811.050.050	5705499400366	50	500	0,68
811.075.050	5705499400441	50	750	1,00
811.100.050	5705499400526	50	1000	1,25
811.150.050	5705499400601	50	1500	1,90
811.200.050	5705499400687	50	2000	2,45
811.300.050	5705499400762	50	3000	3,82
811.400.050	5705499400854	50	4000	5,06
811.500.050	5705499400939	50	5000	6,31
811.600.050	5705499401011	50	6000	7,56

811.015.075	5705499400229	75	150	0,41
811.025.075	5705499400304	75	250	0,58
811.050.075	5705499400380	75	500	1,00
811.075.075	5705499400465	75	750	1,50
811.100.075	5705499400540	75	1000	1,95
811.150.075	5705499400625	75	1500	2,75
811.200.075	5705499400700	75	2000	3,70
811.300.075	5705499400793	75	3000	5,78
811.400.075	5705499400878	75	4000	7,66
811.500.075	5705499400953	75	5000	9,54
811.600.075	5705499401035	75	6000	11,42

811.015.082	5705499411591	82	150	0,44
811.025.082	5705499411614	82	250	0,64
811.050.082	5705499411638	82	500	1,14
811.075.082	5705499411652	82	750	1,65
811.100.082	5705499411676	82	1000	2,15
811.150.082	5705499411690	82	1500	3,16
811.200.082	5705499411713	82	2000	4,17
811.300.082	5705499411737	82	3000	6,20
811.400.082	5705499411751	82	4000	8,22
811.500.082	5705499411775	82	5000	10,24
811.600.082	5705499411799	82	6000	12,26

811.015.110	5705499400243	110	150	0,61
811.025.110	5705499400328	110	250	0,87
811.050.110	5705499400403	110	500	1,50
811.075.110	5705499400489	110	750	2,15
811.100.110	5705499400564	110	1000	2,85
811.150.110	5705499400649	110	1500	4,30

Continues on next page

STRAIGHT PIPE WITH ONE SOCKET TYPE 811

Type no.	EAN no.	D	X	Kg
Continued from previous page				
811.200.110	5705499400724	110	2000	5,40
811.300.110	5705499400816	110	3000	8,34
811.400.110	5705499400892	110	4000	11,26
811.500.110	5705499400977	110	5000	14,02
811.600.110	5705499401059	110	6000	16,78

811.015.125	5705499410839	125	150	0,70
811.025.125	5705499408218	125	250	1,01
811.050.125	5705499408232	125	500	1,78
811.075.125	5705499410860	125	750	2,55
811.100.125	5705499408263	125	1000	3,32
811.150.125	5705499408287	125	1500	4,86
811.200.125	5705499408300	125	2000	6,40
811.300.125	5705499410907	125	3000	9,47
811.400.125	5705499410914	125	4000	12,55
811.500.125	5705499410938	125	5000	15,63
811.600.125	5705499410952	125	6000	18,71

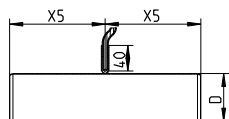
811.015.160	5705499400267	160	150	1,19
811.025.160	5705499400342	160	250	1,69
811.050.160	5705499400427	160	500	2,96
811.075.160	5705499400502	160	750	4,22
811.100.160	5705499400588	160	1000	5,48
811.150.160	5705499400663	160	1500	8,02
811.200.160	5705499400748	160	2000	10,54
811.300.160	5705499400830	160	3000	15,59
811.400.160	5705499400915	160	4000	20,64
811.500.160	5705499400991	160	5000	25,69
811.600.160	5705499401073	160	6000	30,74

811.015.200	5705499412291	200	150	1,96
811.025.200	5705499412307	200	250	2,77
811.050.200	5705499412314	200	500	4,62
811.075.200	5705499412321	200	750	6,47
811.100.200	5705499412338	200	1000	8,32
811.200.200	5705499412345	200	2000	15,71
811.300.200	5705499412352	200	3000	23,10

811.050.250	5705499121735	250	500	5,84
811.100.250	5705499121742	250	1000	10,47
811.200.250	5705499121759	250	2000	19,72
811.300.250	5705499121766	250	3000	28,97

811.050.315 S	5705499413748	315	500	9,93
811.100.315 S	5705499413762	315	1000	17,70
811.200.315 S	5705499413786	315	2000	33,24
811.300.315 S	5705499413809	315	3000	48,77

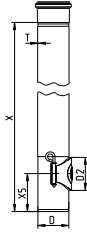
EQUIPOTENTIAL BONDING PIPE WITH TWO SPIGOT ENDS TYPE 815



Type no.	EAN no.	D	X5	Kg
815.015.110 S	5705499139006	110	75	0,45
815.030.075 S	5705499129359	75	150	0,60
815.030.110 S	5705499408447	110	150	0,99
815.030.125 S	5705499129366	125	150	0,97
815.030.160 S	5705499129373	160	150	1,53
815.030.200 S	5705499129380	200	150	2,27

PIPE WITH ACCESS TYPE 813

IMPACT RESISTANT

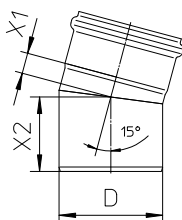


Type no.	EAN no.	D	D2	X	X5	T	Kg
813.150.075	5705499413557	75	80	1500	92	2	5,61
813.150.110	5705499413540	110	120	1500	123	2	8,41

For non pressurized system

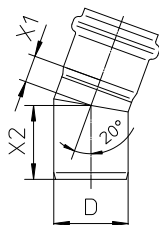
- Bends

BEND 15° TYPE 820.015



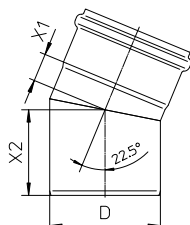
Type no.	EAN no.	D	X1	X2	Kg
820.015.040	5705499412857	40	15	53	0,12
820.015.050	5705499401127	50	19	53	0,15
820.015.075	5705499401141	75	21	65	0,28
820.015.082	5705499411812	82	17	64	0,30
820.015.110	5705499401165	110	25	78	0,47
820.015.125	5705499408607	125	19	84	0,56
820.015.160	5705499401189	160	29	99	1,08
820.015.200 S	5705499410976	200	31	123	1,99
820.015.250 S	5705499121599	250	38	136	3,03
820.015.315 S	5705499413816	315	46	151	5,50

BEND 20° TYPE 820.020



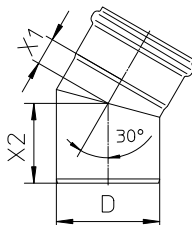
Type no.	EAN no.	D	X1	X2	Kg
820.020.050	5705499401202	50	18	50	0,15

BEND 22.5° TYPE 820.023



Type no.	EAN no.	D	X1	X2	Kg
820.023.050 S	5705499408621	50	15	57	0,15
820.023.075 S	5705499401219	75	21	71	0,29
820.023.110 S	5705499408638	110	28	85	0,51
820.023.160 S	5705499408645	160	39	109	1,18

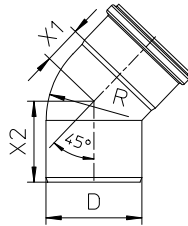
BEND 30° TYPE 820.030



Type no.	EAN no.	D	X1	X2	Kg
820.030.040	5705499412871	40	18	55	0,13
820.030.050	5705499401226	50	23	57	0,16
820.030.075	5705499401240	75	25	70	0,28
820.030.082	5705499411836	82	23	70	0,32
820.030.110	5705499401264	110	33	86	0,51
820.030.125	5705499408652	125	28	98	0,63
820.030.160	5705499401288	160	40	110	1,19
820.030.200 S	5705499410983	200	45	137	2,20
820.030.250 S	5705499121605	250	56	153	3,35
820.030.315 S	5705499413823	315	68	172	6,18

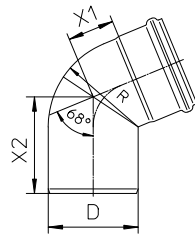
- Bends

BEND 45° TYPE 820.045



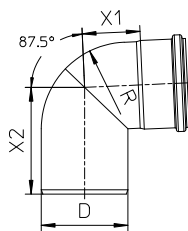
Type no.	EAN no.	D	X1	X2	R	Kg
820.045.040	5705499412895	40	21	58	40	0,13
820.045.050	5705499401301	50	27	60	50	0,17
820.045.075	5705499401325	75	34	76	75	0,30
820.045.082	5705499411850	82	30	80	82	0,34
820.045.110	5705499401349	110	43	93	110	0,56
820.045.125	5705499408676	125	58	111	125	0,73
820.045.160	5705499401363	160	57	128	172	1,55
820.045.200 S	5705499414011	200	61	151	200	2,38
820.045.250 S	5705499414028	250	77	177	250	3,69

BEND 68° TYPE 820.068



Type no.	EAN no.	D	X1	X2	R	Kg
820.068.082	5705499412369	82	41	97	82	0,40
820.068.110	5705499403817	110	57	118	110	0,60

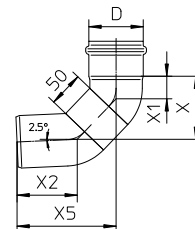
BEND 87.5° TYPE 820.090



Type no.	EAN no.	D	X1	X2	R	Kg
820.090.040	5705499412918	40	32	79	40	0,16
820.090.050	5705499401387	50	41	87	50	0,21
820.090.075	5705499401400	75	54	108	75	0,39
820.090.082	5705499411874	82	53	109	82	0,43
820.090.110	5705499401424	110	74	136	110	0,67
820.090.125	5705499408720	125	93	161	125	1,68
820.090.160	5705499401448	160	103	184	171	2,10
820.090.200 S	5705499414042	200	116	216	200	3,00
820.090.250 S	5705499414059	250	145	269	250	4,77

Please notice for the land based UK market:
To comply with BS EN 12056 Gravity Drainage inside Buildings use 821 bend at offsets and base of stack.

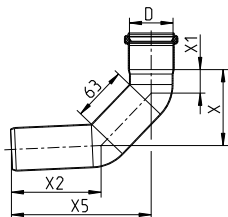
BEND, LONG RADIUS 87.5° , 50 MM TYPE 821.000



Type no.	EAN no.	D	X	X1	X2	X5	Kg
821.000.050	5705499404005	50	77	26	72	120	0,30
821.000.075	5705499404029	75	90	32	86	141	0,50

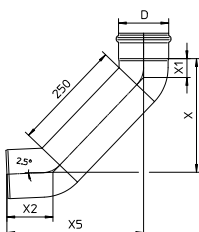
- Bends

BEND, LONG RADIUS 87.5°, 164 MM TYPE 821.164



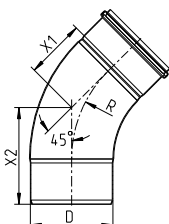
Type no.	EAN no.	D	X	X1	X2	X5	Kg
821.164.050 S	5705499124057	50	87	27	103	160	0,32

BEND, LONG RADIUS 87.5°, 250 MM TYPE 821.090



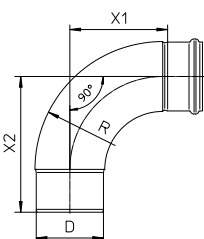
Type no.	EAN no.	D	X	X1	X2	X5	Kg
821.090.050	5705499408751	50	221	26	72	259	0,50
821.090.075	5705499408775	75	234	32	87	280	0,90
821.090.110	5705499401462	110	255	42	103	307	1,61
821.090.125	5705499412178	125	275	58	126	335	1,72
821.090.160	5705499401486	160	285	56	137	356	3,25

BEND, LARGE RADIUS 45° TYPE 825.045



Type no.	EAN no.	D	X1	X2	R	Kg
825.045.200 S	5705499410990	200	144	234	300	4,18
825.045.250 S	5705499121612	250	187	280	375	6,53
825.045.315 S	5705499413830	315	204	320	400	10,78

BEND, LARGE RADIUS 87.5° TYPE 825.090

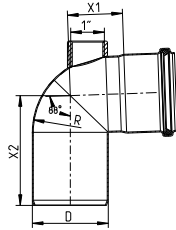


Type no.	EAN no.	D	X1	X2	R	Kg
825.090.050 S	5705499408843	50	77	125	97	0,65
825.090.075 S	5705499408850	75	104	155	133	1,00
825.090.110 S	5705499408867	110	160	222	209	1,41
825.090.160 S	5705499408874	160	244	322	313	2,99
825.090.200 S	5705499411423	200	307	397	300	6,41
825.090.250 S	5705499121629	250	391	484	375	9,88
825.090.315 S	5705499413847	315	421	538	400	15,78

Please notice for the land based UK market:
To comply with BS EN 12056 Gravity Drainage inside Buildings use 821 bend at offsets and base of stack.

- Bends

BEND 87.5° WITH ACCESS TYPE 823

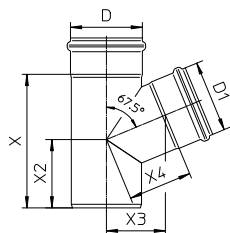


Type no.	EAN no.	D	X1	X2	R	Kg
823.090.050	5705499408812	50	41	87	50	0,26
823.090.075	5705499408829	75	54	108	75	0,50
823.090.110	5705499408836	110	74	136	110	0,91

For non pressurized system

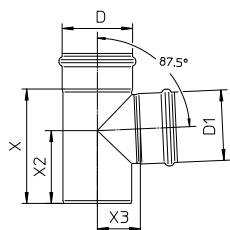
- Branches

BRANCH 67.5° TYPE 829



Type no.	EAN no.	D	D1	X	X2	X3	X4	Kg
829.050.075	5705499401585	75	50	139	80	64	70	1,00
829.050.082	5705499411898	82	50	133	73	67	72	0,50
829.075.075	5705499401592	75	75	150	80	73	79	0,53
829.075.082	5705499411904	82	75	160	87	64	71	0,62
829.082.082	5705499411911	82	82	168	91	67	72	0,66
829.110.110	5705499403824	110	110	209	107	92	100	0,88

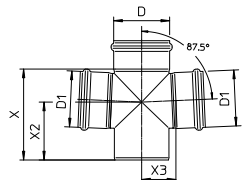
BRANCH 87.5° TYPE 830



Type no.	EAN no.	D	D1	X	X2	X3	Kg
830.040.040	5705499412932	40	40	101	69	30	0,22
830.040.050	5705499412956	50	40	106	71	35	0,26
830.050.050	5705499401608	50	50	106	71	35	0,27
830.050.075	5705499401622	75	50	139	98	49	0,44
830.050.082	5705499411928	82	50	128	86	52	0,47
830.050.110	5705499401646	110	50	132	93	66	0,64
830.050.160	5705499401660	160	50	158	109	88	2,40
830.075.075	5705499401684	75	75	139	90	52	0,50
830.075.082	5705499411942	82	75	154	99	55	0,57
830.075.110	5705499401707	110	75	152	104	69	0,76
830.075.125	5705499408942	125	75	187	110	77	0,94
830.075.160	5705499412550	160	75	179	121	95	1,46
830.082.082	5705499411966	82	82	162	103	56	0,61
830.110.110	5705499401721	110	110	183	117	69	0,88
830.110.125	5705499408973	125	110	205	127	77	1,25
830.110.160	5705499401745	160	110	236	152	93	1,84
830.125.125	5705499409000	125	125	220	135	82	1,17
830.160.160	5705499401769	160	160	288	184	104	2,40
830.160.200 S	5705499411003	200	160	293	186	125	3,45
830.200.200 S	5705499411010	200	200	333	206	128	4,17
830.200.250 S	5705499121636	250	200	352	220	155	5,50
830.250.250 S	5705499121643	250	250	407	245	152	6,53
830.250.315 S	5705499413854	315	250	416	253	189	9,95
830.315.315 S	5705499413861	315	315	481	286	196	12,22

Please notice for the land based UK market:
To comply with BS EN 12056 Gravity Drainage inside Buildings, when using non reducing branch consider branch type 838, 848 or 839

DOUBLE BRANCH 87.5° TYPE 831

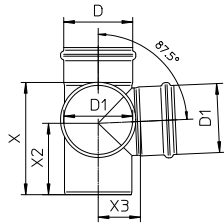


Type no.	EAN no.	D	D1	X	X2	X3	Kg
831.050.050	5705499401783	50	50	106	71	35	0,36
831.050.075	5705499401806	75	50	139	98	49	0,54
831.050.110	5705499401820	110	50	132	93	66	0,72
831.050.160	5705499412567	160	50	158	109	88	1,38
831.075.075	5705499401844	75	75	139	90	52	0,66
831.075.110	5705499401868	110	75	152	104	69	0,89
831.110.110	5705499401882	110	110	183	116	69	1,14
831.110.160	5705499401905	160	110	236	152	94	2,05
831.160.160	5705499401929	160	160	288	184	104	2,91

Please notice for the land based UK market:
To comply with BS EN 12056 Gravity Drainage inside Buildings, when using non reducing branch consider branch type 836.

- Branches

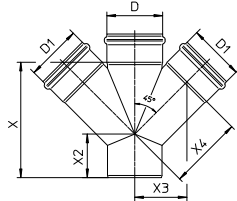
DOUBLE BRANCH 87.5° TYPE 832



Type no.	EAN no.	D	D1	X	X2	X3	Kg
832.050.050	5705499401943	50	50	106	71	35	0,36
832.050.075	5705499401967	75	50	139	98	49	0,54
832.050.110	5705499401981	110	50	132	93	66	0,72
832.075.075	5705499402001	75	75	139	90	52	0,66
832.075.110	5705499402025	110	75	152	104	69	0,89
832.110.110	5705499402049	110	110	183	116	69	1,14
832.110.160	5705499402063	160	110	236	152	94	2,05
832.160.160	5705499402087	160	160	288	184	104	2,91

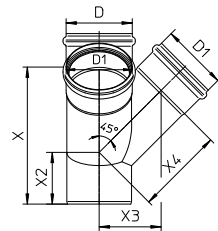
Please notice for the land based UK market:
To comply with BS EN 12056 Gravity Drainage inside Buildings, when using non reducing branch consider branch type 837.

DOUBLE BRANCH 45° TYPE 836



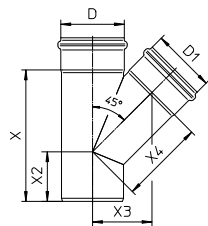
Type no.	EAN no.	D	D1	X	X2	X3	X4	Kg
836.050.050 S	5705499402117	50	50	128	57	54	76	0,59
836.050.075 S	5705499402131	75	50	144	56	66	94	0,69
836.050.110 S	5705499402155	110	50	147	42	84	119	0,80
836.075.075 S	5705499402179	75	75	183	74	78	110	1,15
836.075.110 S	5705499402193	110	75	182	60	95	135	1,31
836.110.110 S	5705499402216	110	110	233	88	105	149	2,10
836.110.125 S	5705499412574	125	110	250	90	110	155	1,65
836.110.160 S	5705499402223	160	110	258	80	131	186	2,85
836.125.125 S	5705499412581	125	125	273	103	120	170	2,10
836.160.160 S	5705499402230	160	160	331	120	156	221	5,28
836.200.200 S	5705499412598	200	200	415	151	194	274	5,28
836.250.250 S	5705499412604	250	250	512	177	236	334	7,01

DOUBLE BRANCH 45° TYPE 837



Type no.	EAN no.	D	D1	X	X2	X3	X4	Kg
837.050.050 S	5705499402254	50	50	128	57	54	76	0,49
837.050.075 S	5705499402278	75	50	144	56	66	94	0,67
837.050.110 S	5705499402285	110	50	147	42	84	119	0,92
837.075.075 S	5705499402292	75	75	183	74	78	110	1,43
837.075.110 S	5705499402308	110	75	182	60	95	135	1,31
837.110.110 S	5705499402322	110	110	233	88	105	149	2,07
837.110.160 S	5705499402339	160	110	258	80	131	186	2,07
837.160.160 S	5705499402346	160	160	331	120	156	221	4,02

OBLIQUE BRANCH 45° TYPE 838



Type no.	EAN no.	D	D1	X	X2	X3	X4	Kg
838.040.040	5705499412994	40	40	118	58	45	63	0,25
838.040.050	5705499413014	50	40	119	55	50	71	0,30
838.050.050	5705499402353	50	50	133	62	54	76	0,32
838.050.075	5705499402377	75	50	144	56	66	94	0,48
838.050.082	5705499411980	82	50	149	57	72	102	0,54
838.050.110	5705499402391	110	50	147	42	84	119	0,70
838.075.075	5705499402414	75	75	183	78	78	110	0,64
838.075.082	5705499412000	82	75	185	75	81	114	0,70
838.075.110	5705499402438	110	75	181	60	95	135	0,88
838.075.125	5705499409314	125	75	200	65	100	141	1,32
838.082.082	5705499412024	82	82	195	80	83	118	0,75
838.110.110	5705499402452	110	110	236	91	105	149	1,16
838.110.125	5705499409338	125	110	250	90	110	155	1,50
838.110.160	5705499402476	160	110	258	80	131	186	2,11
838.125.125	5705499409352	125	125	273	103	120	170	1,49

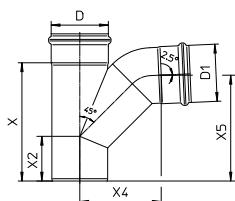
Continues on next page

- Branches

OBLIQUE BRANCH 45° TYPE 838

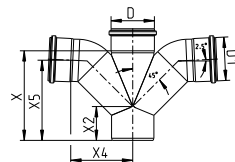
Type no.	EAN no.	D	D1	X	X2	X3	X4	Kg
Continued from previous page								
838.160.160	5705499402490	160	160	331	120	156	220	3,04
838.160.200 S	5705499411027	200	160	359	123	177	250	4,37
838.200.200 S	5705499411034	200	200	415	151	194	274	5,47
838.200.250 S	5705499121650	250	200	432	142	217	307	6,61
838.250.250 S	5705499121667	250	250	512	177	236	334	8,57
838.250.315 S	5705499413878	315	250	518	154	270	416	12,48
838.315.315 S	5705499413885	315	315	621	200	294	382	16,53

SWEPT BRANCH 87.5° TYPE 839



Type no.	EAN no.	D	D1	X	X2	X4	X5	Kg
839.050.050	5705499402513	50	50	133	62	84	121	0,44
839.050.075	5705499402537	75	50	144	56	97	128	0,60
839.050.110	5705499402551	110	50	147	42	115	132	0,81
839.075.075	5705499402575	75	75	183	78	114	160	0,87
839.075.110	5705499402599	110	75	182	60	130	160	1,11
839.110.110	5705499402612	110	110	236	91	161	212	1,64
839.110.160	5705499402636	160	110	258	80	186	227	2,53
839.160.160	5705499402650	160	160	331	120	223	298	4,52
839.200.200 S	5705499412611	200	200	415	151	428	434	6,13
839.250.250 S	5705499412628	250	250	512	177	535	525	9,67

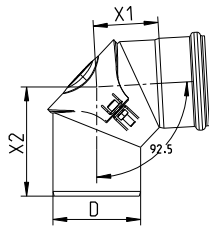
DOUBLE SWEPT BRANCH TYPE 879



Type no.	EAN no.	D	D1	X	X2	X4	X5	Kg
879.110.110 S	5705499403916	110	110	233	88	161	208	1,80

- Access pipes and bends

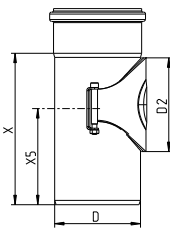
BEND 87.5° WITH ACCESS TYPE 822



Type no.	EAN no.	D	X1	X2	Kg
822.090.075	5705499401509	75	57	102	0,61
822.090.110	5705499401523	110	81	137	0,97
822.090.160	5705499401547	160	112	205	1,97

For non pressurized system

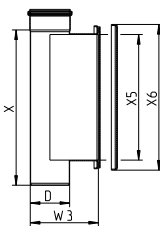
PIPE WITH ACCESS TYPE 840



Type no.	EAN no.	D	D2	X	X5	Kg
840.075.075	5705499402674	75	80	139	92	0,64
840.110.110	5705499403794	110	120	194	123	0,90
840.111.110	5705499402698	110	120	253	187	1,16
840.125.125 S	5705499411058	125	120	195	128	1,28
840.160.160	5705499402711	160	120	277	208	2,41
840.200.200 S	5705499412215	200	120	288	208	3,45

For non pressurized system

PIPE WITH ACCESS TYPE 840.000

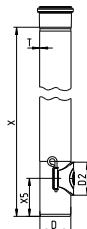


Type no.	EAN no.	D	W3	X	X5	X6	Kg
840.000.110 S	5705499127553	110	190	433	350	406	6,67
840.000.160 S	5705499127560	160	265	499	400	456	8,25
840.000.200 S	5705499127577	200	330	618	500	556	13,15
840.000.250 S	5705499127584	250	405	742	600	656	18,93

For below ground

PIPE WITH ACCESS TYPE 813

IMPACT RESISTANT

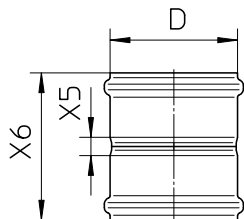


Type no.	EAN no.	D	D2	X	X5	T	Kg
813.150.075	5705499413557	75	80	1500	92	2	5,61
813.150.110	5705499413540	110	120	1500	123	2	8,41

For non pressurized system

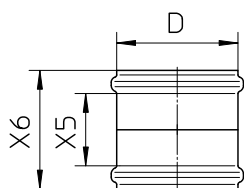
- Sockets

DOUBLE COUPLING TYPE 841



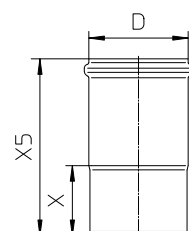
Type no.	EAN no.	D	X5	X6	Kg
841.040.040	5705499413038	40	20	104	0,13
841.050.050	5705499402735	50	13	97	0,15
841.075.075	5705499402759	75	20	120	0,26
841.082.082 S	5705499412048	82	20	124	0,31
841.110.110	5705499402773	110	16	130	0,45
841.125.125	5705499409475	125	20	140	0,54
841.160.160	5705499402797	160	20	162	1,05
841.200.200 S	5705499411065	200	20	200	1,85
841.250.250 S	5705499121674	250	30	246	3,11
841.315.315 S	5705499413908	315	30	262	5,36

DOUBLE SLIP COUPLING TYPE 842



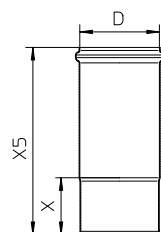
Type no.	EAN no.	D	X5	X6	Kg
842.040.040 S	5705499413069	40	76	104	0,13
842.050.050 S	5705499402810	50	71	97	0,12
842.075.075 S	5705499402827	75	91	120	0,21
842.082.082 S	5705499412055	82	95	124	0,31
842.110.110 S	5705499402834	110	97	130	0,45
842.125.125 S	5705499409550	125	104	140	0,47
842.160.160 S	5705499402841	160	118	162	1,05
842.200.200 S	5705499411072	200	147	200	1,82
842.250.250 S	5705499121681	250	173	264	3,11
842.315.315 S	5705499413915	315	177	262	5,36

EXPANSION SOCKET TYPE 843



Type no.	EAN no.	D	X	X5	Kg
843.095.040	5705499413076	40	55	150	0,17
843.105.050	5705499402858	50	57	159	0,21
843.115.075	5705499402872	75	62	175	0,36
843.125.110	5705499402896	110	79	200	0,57
843.140.125	5705499122503	125	100	240	0,81
843.182.160	5705499402919	160	122	292	1,55

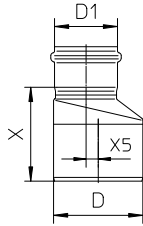
EXPANSION SOCKET, LONG MODEL TYPE 869



Type no.	EAN no.	D	X	X5	Kg
869.143.050	5705499410617	50	57	200	0,25
869.163.075	5705499410631	75	62	225	0,40
869.170.082	5705499121339	82	70	240	0,54
869.181.110	5705499410655	110	79	260	0,70
869.200.125	5705499412192	125	100	300	0,99
869.238.160	5705499410679	160	122	360	1,85
869.300.200 S	5705499121353	200	120	420	2,43

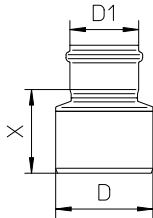
- Increasers and reducers

INCREASER ECCENTRIC TYPE 850



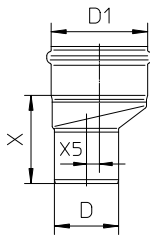
Type no.	EAN no.	D	D1	X	X5	Kg
850.040.050 S	5705499413397	50	40	85	5	0,16
850.050.075	5705499403084	75	50	87	7	0,22
850.050.082 S	5705499412062	82	50	97	14	0,25
850.050.110	5705499403107	110	50	114	25	0,38
850.075.110	5705499403138	110	75	116	15	0,42
850.075.160	5705499403169	160	75	178	37	1,20
850.082.110 S	5705499412086	110	82	111	11	0,43
850.110.125 S	5705499413410	125	110	109	8	0,49
850.110.160	5705499403206	160	110	140	22	1,06
850.125.160 S	5705499413427	160	125	138	18	0,95
850.160.200 S	5705499413434	200	160	165	20	1,67
850.200.250 S	5705499413441	250	200	195	25	2,57
850.200.315 S	5705499413953	315	200	280	58	4,61
850.250.315 S	5705499413977	315	250	242	33	4,82

INCREASER CONCENTRIC TYPE 850



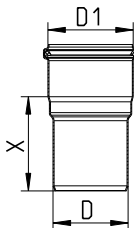
Type no.	EAN no.	D	D1	X	Kg
850.040.050 CS	5705499413991	50	40	65	0,13
850.050.075 CS	5705499409734	75	50	82	0,20
850.050.110 CS	5705499408454	110	50	94	0,30
850.075.082 CS	5705499412079	82	75	96	0,29
850.075.110 C	5705499403145	110	75	95	0,37
850.082.110 CS	5705499412093	110	82	110	1,00
850.110.125 CS	5705499409758	125	110	103	0,52
850.110.160 CS	5705499408461	160	110	117	1,00
850.125.160 CS	5705499408478	160	125	145	1,00
850.160.200 CS	5705499411096	200	160	170	1,50
850.200.250 CS	5705499121698	250	200	176	1,98
850.200.315 CS	5705499413946	315	200	223	4,11
850.250.315 CS	5705499413960	315	250	180	3,74

REDUCER ECCENTRIC TYPE 850



Type no.	EAN no.	D	D1	X	X5	Kg
850.050.040 S	5705499403961	40	50	77	5	0,10
850.075.050 S	5705499403121	50	75	80	7	0,28
850.110.050 S	5705499403183	50	110	99	25	0,50
850.110.075 S	5705499403190	75	110	104	15	0,55
850.110.082 S	5705499413342	82	110	101	11	0,29
850.125.110 S	5705499413359	110	125	96	8	1,00
850.160.110 S	5705499408485	110	160	123	22	1,08
850.160.125 S	5705499413366	125	160	136	18	0,50
850.200.160 S	5705499413373	160	200	153	20	1,77
850.250.200 S	5705499413380	200	250	192	25	1,00
850.315.250 S	5705499413984	250	315	229	33	4,93

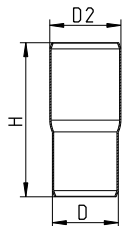
REDUCER CONCENTRIC TYPE 850



Type no.	EAN no.	D	D1	X	Kg
850.050.032 S	5705499403053	32	50	52	0,15
850.082.075 CS	5705499413465	75	82	94	1,00

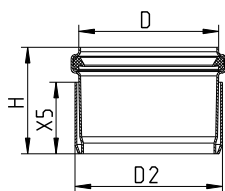
- Adaptors

ADAPTOR FOR PVC PIPE TYPE 852



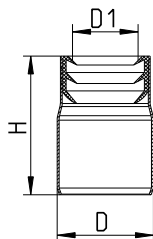
Type no.	EAN no.	D	H.	D2	Kg
852.050.054 S	5705499409772	50	117	54	0,12
852.075.082 S	5705499409796	75	123	82	0,24

ADAPTOR FOR PVC PIPE TYPE 852



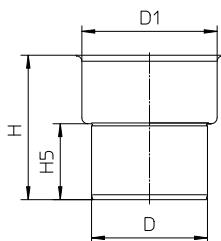
Type no.	EAN no.	D	H.	D2	X5	Kg
852.050.054 SOS	5705499409789	50	49	54	30	0,12
852.075.082 SOS	5705499409802	75	60	82	40	0,24

ADAPTOR FOR PVC PIPE TYPE 852



Type no.	EAN no.	D	D1	H.	Kg
852.075.052	5705499126709	75	52	108	0,31

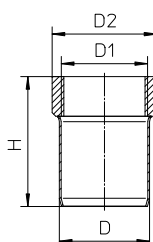
ADAPTOR FOR CAST IRON PIPE TYPE 853



Type no.	EAN no.	D	D1	H.	H5.	Kg
853.093.075 S	5705499403251	75	93	125	66	0,24
853.127.110 S	5705499403268	110	127	141	76	0,38

Please order rubber insert type 803 separately

FEMALE ADAPTOR TYPE 885.0

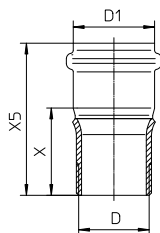


Type no.	EAN no.	D	D1	H.	D2	Kg
885.032.040 S	5705499403954	40	1¼"	70	45	0,20
885.040.040 S	5705499403947	40	1½"	73	57	0,20
885.025.050 S	5705499403435	50	1"	93	40	0,18
885.032.050 S	5705499403459	50	1¼"	72	48	0,17
885.040.050 S	5705499403466	50	1½"	72	58	0,19
885.050.050 S	5705499403473	50	2"	77	67	0,22

BSP thread.

- Adaptors

MALE ADAPTOR TYPE 886.0

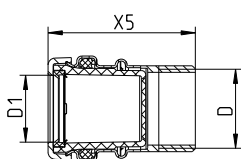


Type no.	EAN no.	D	D1	X	X5	Kg
886.050.032	5705499410693	1¼"	50	55	97	0,25
886.050.040 S	5705499403497	1½"	50	56	98	0,23
886.050.050 S	5705499403503	2"	50	56	98	0,27

BSP thread.

ADAPTOR TYPE 880

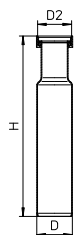
FOR SHOWER DRAINS PRODUCED BEFORE 1998



Type no.	EAN no.	D	D1	X5	Kg
880.032.000	5705499114331	1¼"	32	73	0,13

BSP thread.

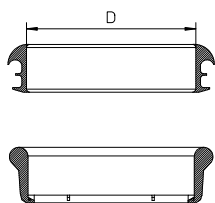
PIPE WITH 1½" SWIVEL NUT TYPE 851



Type no.	EAN no.	D	H.	D2	Kg
851.025.040 S	5705499409765	50	205	1½"	0,35

BSP thread.

RUBBER INSERT TYPE 803

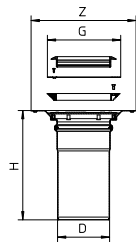


Type no.	EAN no.	D	Kg
803.MEN.075	5705499400144	75	0,14
803.MEN.110	5705499400151	110	0,20
803.MEN.160	5705499400168	160	0,26

- Adaptors

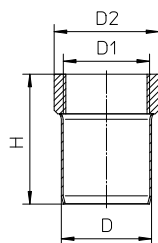
PENETRATION TYPE 865

FOR VINYL FLOORS



Type no.	EAN no.	D	Z	G	H	Kg
865.155.110	5705499403411	110	Ø222	Ø155	231	1,24

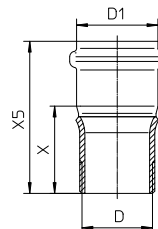
FEMALE ADAPTOR TYPE 885.1



Type no.	EAN no.	D	D1	H	D2	Kg
885.125.050 S	5705499413618	50	1"	92	39	0,26
885.132.040 S	5705499413588	40	1¼"	73	48	0,18
885.132.050 S	5705499413601	50	1¼"	73	48	0,19
885.140.040 S	5705499413571	40	1½"	74	54	0,19
885.140.050 S	5705499413595	50	1½"	73	54	0,20
885.150.050 S	5705499413625	50	2"	83	66	0,29
885.175.075 S	5705499413632	75	3"	95	94	0,59

NPT thread.

MALE ADAPTOR TYPE 886.1

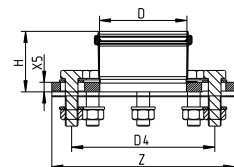


Type no.	EAN no.	D	D1	X	X5	Kg
886.150.032 S	5705499413656	1¼"	50	58	100	0,33
886.150.040 S	5705499413649	1½"	50	58	100	0,36
886.150.050 S	5705499413663	2"	50	57	99	0,45

NPT thread.

UNIVERSAL FLANGE TYPE 854.500

WITH SOCKET



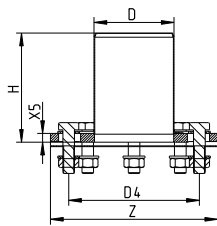
Type no.	EAN no.	D	Z	H	D4	X5	Kg
854.500.050 S	5705499138870	50	Ø160	58	94-126	10	0,85
854.500.075 S	5705499138894	75	Ø200	71	129-161	12	1,49
854.500.110 S	5705499138917	110	Ø230	76	163-192	12	2,16
854.500.125 S	5705499138931	125	Ø255	84	198-217	15	3,28
854.500.160 S	5705499138955	160	Ø285	102	228-244	15	3,72

Flanges with 4 screw joints (D=50-75mm)
 Flanges with 8 screw joints (D=110-160mm)

- Adaptors

UNIVERSAL FLANGE TYPE 854.510

WITH SPIGOT



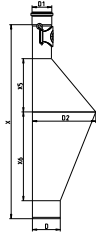
Type no.	EAN no.	D	Z.	H.	D4	X5	Kg
854.510.050 S	5705499138887	50	Ø160	150	94-126	10	0,95
854.510.075 S	5705499138900	75	Ø200	150	129-161	12	1,61
854.510.110 S	5705499138924	110	Ø230	150	163-192	12	2,32
854.510.125 S	5705499138948	125	Ø255	150	198-217	15	3,43
854.510.160 S	5705499138962	160	Ø285	150	228-244	15	3,72

Flanges with 4 screw joints (D=50-75mm)

Flanges with 8 screw joints (D=110-160mm)

- Rat stops

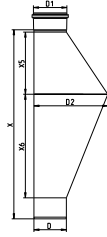
RAT STOP WITH ACCESS TYPE 891



Type no.	EAN no.	D	D1	D2	X	X5	X6	Kg
891.075.110	5705499413472	110	75	250	764	210	350	4,73
891.110.110	5705499413489	110	110	250	814	210	350	5,22
891.125.125	5705499413496	125	125	250	836	210	350	5,56

For non pressurized system

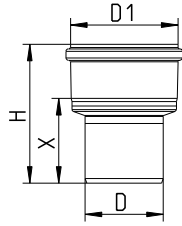
RAT STOP WITHOUT ACCESS TYPE 892



Type no.	EAN no.	D	D1	D2	X	X5	X6	Kg
892.075.110	5705499123425	110	75	250	678	210	350	4,34
892.110.110	5705499123432	110	110	250	640	210	350	4,32

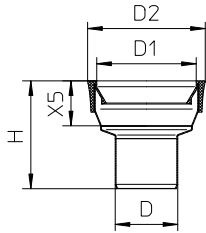
- Toilet adaptors

TOILET ADAPTOR STRAIGHT TYPE 855.000



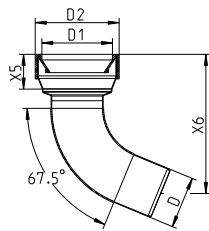
Type no.	EAN no.	D	D1	H.	X	Kg
855.000.082 S	5705499412116	82	110	147	90	0,41

TOILET ADAPTOR STRAIGHT TYPE 855.090



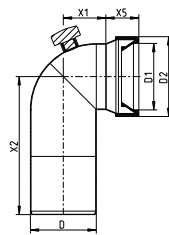
Type no.	EAN no.	D	D1	H.	D2	X5	Kg
855.090.075 S	5705499403299	75	110	130	133	55	0,42
855.090.082 S	5705499412123	82	110	137	133	55	0,51
855.090.110 S	5705499403305	110	110	126	133	55	0,39

TOILET ADAPTOR 68° TYPE 856



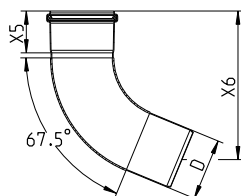
Type no.	EAN no.	D	D1	D2	X5	X6	Kg
856.090.082	5705499412130	82	110	133	55	220	1,26

TOILET ADAPTOR 90° TYPE 857



Type no.	EAN no.	D	D1	D2	X1	X2	X5	Kg
857.090.110	5705499403336	110	110	133	71	230	55	1,33

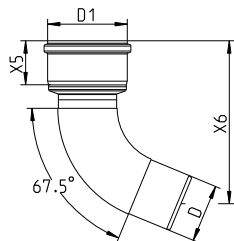
TOILET ADAPTOR 68° TYPE 858.068



Type no.	EAN no.	D	X5	X6	Kg
858.068.082	5705499123487	82	55	197	0,86

- Toilet adaptors

TOILET ADAPTOR 68° TYPE 858.090

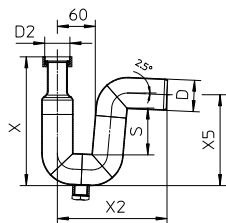


Type no.	EAN no.	D	D1	X5	X6	Kg
858.090.082	5705499412147	82	110	62	230	1,12

Water traps

P-TRAP 87.5° TYPE 525

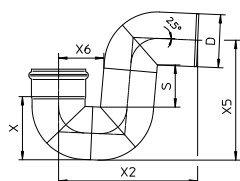
WITH COUPLING AND DRAIN PLUG



Type no.	EAN no.	D	S	D2	X	X2	X5	Kg
525.032.050 S	5705499114065	50	74	1¼"	205	175	145	0,95
525.040.050 S	5705499114072	50	74	1½"	205	175	145	0,90
525.050.050 S	5705499114089	50	74	2"	205	175	145	0,88

BSP thread.

P-TRAP 87.5° TYPE 525.090



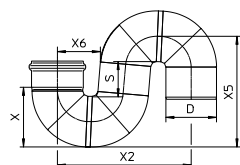
Type no.	EAN no.	D	S	X	X2	X5	X6	Kg
525.090.050 S	5705499101461	50	74	67	175	145	60	0,45
525.090.075 S	5705499101478	75	81	93	222	189	74	0,84
525.090.110 S	5705499101485	110	89	132	289	249	94	1,49
525.090.125 S	5705499117974	125	110	158	330	292	102	1,88
525.090.160 S	5705499101492	160	105	187	388	338	121	6,22

FLOW RATES FOR P-TRAP 87.5° TYPE 525.090

Type no.	EAN no.	Min Flow (l/s)	Max Flow (l/s)
525.090.050 S	5705499101461	0.7	1.7
525.090.075 S	5705499101478	2.5	3.7
525.090.110 S	5705499101485	3.4	10.4
525.090.125 S	5705499117974	4.4	15.0
525.090.160 S	5705499101492	7.5	28.5

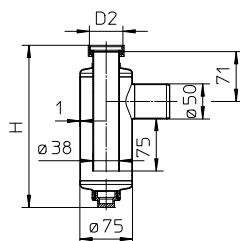
Accurate flow rate depending on installation.

S-TRAP 180° TYPE 525.180



Type no.	EAN no.	D	S	X	X2	X5	X6	Kg
525.180.050 S	5705499114096	50	74	67	166	145	60	0,54
525.180.075 S	5705499114102	75	81	93	217	190	74	1,00
525.180.110 S	5705499114119	110	89	132	292	249	94	2,00
525.180.160 S	5705499114126	160	105	187	394	342	122	4,40

BOTTLE WATER TRAP TYPE 505

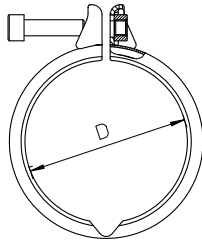


Type no.	EAN no.	H	D2	Kg
505.032.050 S	5705499101447	250	1¼"	0,95
505.040.050 S	5705499101454	233	1½"	0,85
505.050.050 S	5705499114058	243	2"	1,20

75 mm water seal. BSP thread.

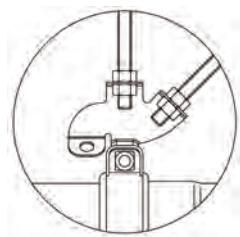
Clamps

PIPE JOINT CLAMP TYPE 847



Type no.	EAN no.	D
847.040.040	5705499413090	40
847.050.050	5705499412420	50
847.075.075	5705499412437	75
847.082.082	5705499121322	82
847.110.110	5705499412444	110
847.125.125	5705499412451	125
847.160.160	5705499412468	160
847.200.200	5705499412475	200
847.250.250	5705499121773	250

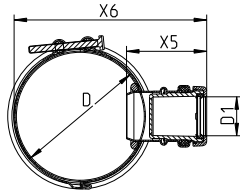
CROSS RAKING FIXING FOR PIPE JOINT CLAMP TYPE 847



Type no.	EAN no.
847.000.000	5705499409628

To be used with pipe joint clamp type 847.

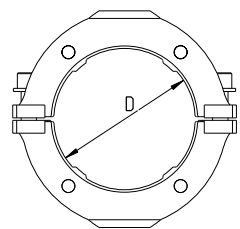
SADDLE CLAMP TYPE 890



Type no.	EAN no.	D	D1	X5	X6
890.075.040	5705499104776	75	32	68	126
890.075.050	5705499104837	75	50	70	124
890.110.040	5705499104806	110	32	68	163
890.110.050	5705499104813	110	50	70	159

D1=32mm fits D1=40mm as well.

PRESSURE PEAK PIPE JOINT CLAMP TYPE 847.001



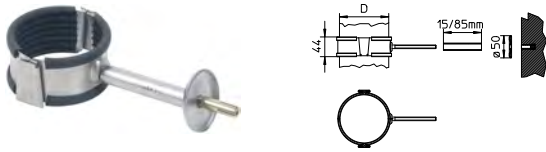
Type no.	EAN no.	D
847.001.040	5705499413106	40
847.001.050	5705499412499	50
847.001.075	5705499412505	75
847.001.082	5705499412512	82
847.001.110	5705499412529	110
847.001.125	5705499412536	125
847.001.160	5705499412543	160
847.001.200	5705499413939	200
847.001.250	5705499413687	250
847.001.315	5705499413694	315

Pipework can withstand brief pressure peaks when fitted with pressure peak joint clamps on all joints.

Not to be used instead of remotely operated valve.

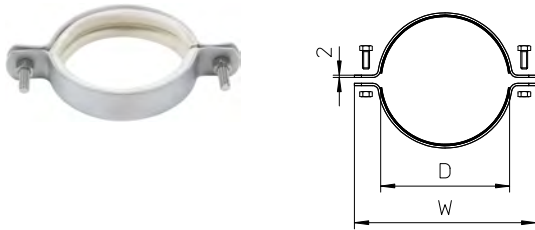
Pipe hangers

PIPE HANGER WITH TPE RUBBER TYPE 860



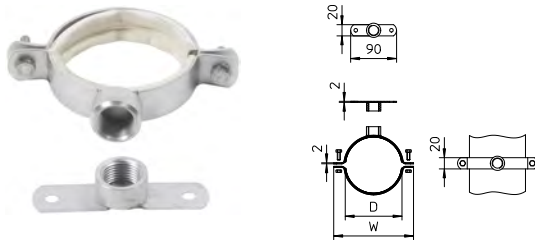
Type no.	EAN no.	D
860.040.050	5705499403350	50
860.040.075	5705499403367	75
860.040.110	5705499403374	110
860.040.160	5705499403381	160

PIPE HANGER WITH EPDM RUBBER TYPE 895.000



Type no.	EAN no.	D	W
895.000.050 GS	5705499403510	50	101
895.000.075 GS	5705499403527	75	126
895.000.110 GS	5705499403534	110	161
895.000.160 GS	5705499403541	160	211

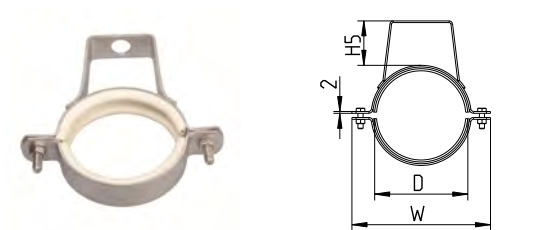
PIPE HANGER WITH EPDM RUBBER TYPE 895.012



Type no.	EAN no.	D	W
895.012.040 GS	5705499413113	40	90
895.012.050 GS	5705499403558	50	101
895.012.075 GS	5705499403565	75	126
895.012.110 GS	5705499403572	110	161
895.012.160 GS	5705499403589	160	211

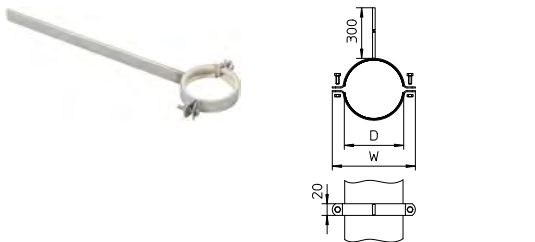
With 1/2" BSP thread.

PIPE HANGER WITH EPDM RUBBER TYPE 895.200



Type no.	EAN no.	D	H5	W
895.200.040 S	5705499413120	40	38	90
895.200.050 S	5705499410747	50	38	101
895.200.075 S	5705499410754	75	54	126
895.200.110 S	5705499410761	110	52	161
895.200.160 S	5705499410778	160	71	211

PIPE HANGER WITH EPDM RUBBER TYPE 895.300

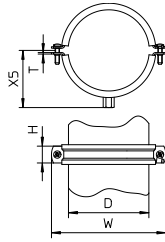


Type no.	EAN no.	D	W
895.300.040 GS	5705499413137	40	90
895.300.050 GS	5705499403633	50	101
895.300.075 GS	5705499403640	75	126
895.300.110 GS	5705499403657	110	161
895.300.160 GS	5705499403664	160	211

Pipe hangers

PIPE HANGER WITH EPDM RUBBER TYPE 895.401

IN GALVANIZED STEEL

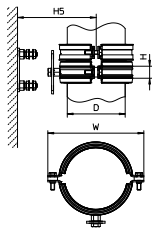


Type no.	EAN no.	D	H.	W	X5	T	Nut
895.401.040	5705499413144	40	20	83	41	1.25	M8/M10
895.401.050	5705499128024	50	20	97	49	1.25	M8/M10
895.401.075	5705499128031	75	23	122	61	2	M8/M10
895.401.110	5705499128048	110	23	157	78	2	M8/M10
895.401.125	5705499128055	125	23	169	84	2	M8/M10
895.401.160	5705499128062	160	25	233	108	3	M8/M10
895.401.200	5705499128079	200	25	273	122	3	M10
895.401.250	5705499128086	250	38	345	163	4	M16
895.401.315	5705499135312	315	48	414	198	5	M16

D=75mm fits D=82mm as well.

PIPE HANGER WITH EPDM RUBBER TYPE 895.402

IN GALVANIZED STEEL



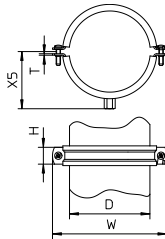
Type no.	EAN no.	D	H.	H5	W
895.402.075	5705499128109	75	25	83-96	154
895.402.110	5705499128116	110	25	100-110	176
895.402.125	5705499128123	125	25	108-118	199
895.402.160	5705499128130	160	25	127-137	234
895.402.200	5705499128147	200	25	152-162	274

Reducing noise transmission to the building.

D=75mm fits D=82mm as well.

PIPE HANGER WITH EPDM RUBBER TYPE 895.403

IN STAINLESS STEEL

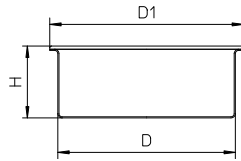


Type no.	EAN no.	D	H.	W	X5	T	Nut
895.403.040 S	5705499413168	40	20	85	32	1.5	M8
895.403.050 S	5705499128161	50	20	97	41	1.5	M8
895.403.075 S	5705499128178	75	20	118	51	2	M8
895.403.110 S	5705499128185	110	20	158	72	2.5	M10
895.403.125 S	5705499128192	125	20	170	78	2.5	M10
895.403.160 S	5705499128208	160	25	233	101	2.5	M10
895.403.200 S	5705499128215	200	25	273	123	3	M10
895.403.250 S	5705499128222	250	25	317	142	2.5	M10

D=75mm fits D=82mm as well.

Plugs

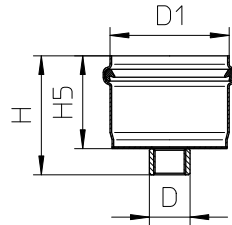
SOCKET PLUG TYPE 844.000



Type no.	EAN no.	D	D1	H.
844.000.040 S	5705499413175	40	50	47
844.000.050 S	5705499402933	50	58	50
844.000.075 S	5705499402940	75	85	45
844.000.110 S	5705499402957	110	120	45
844.000.125 S	5705499412222	125	135	43
844.000.160 S	5705499402964	160	170	45
844.000.200 S	5705499412239	200	210	50
844.000.250 S	5705499123654	250	265	65
844.000.315 S	5705499413922	315	335	82

Use of pipe joint clamp type 847 is necessary if any pressure in the pipe system is expected.

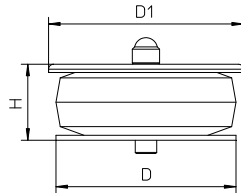
SOCKET PLUG TYPE 844



Type no.	EAN no.	D	D1	H.	H5.
844.069.050	5705499409567	½"	50	67	50
844.082.075	5705499409574	½"	75	78	61
844.087.110	5705499409581	½"	110	84	67

BSP thread.

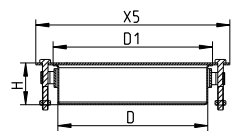
SOCKET PLUG TYPE 844.100



Type no.	EAN no.	D	D1	H.
844.100.050 S	5705499411393	50	59	31
844.100.075 S	5705499411409	75	83	36
844.100.082 S	5705499412109	82	90	36
844.100.110 S	5705499411416	110	118	36

Use of pipe joint clamp type 847 is recommended if the pressure in the pipe system is expected to exceed 0.5 bar for D<110mm and 0.3 bar for D=110mm.

SOCKET PLUG TYPE 845.000

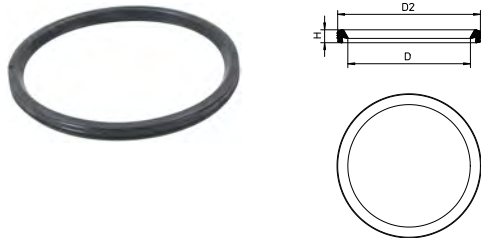


Type no.	EAN no.	D	D1	H.	X5
845.000.160 S	5705499403008	160	170	45	207

Sealing rings

EPDM LIP SEALING RING BLACK TYPE 801

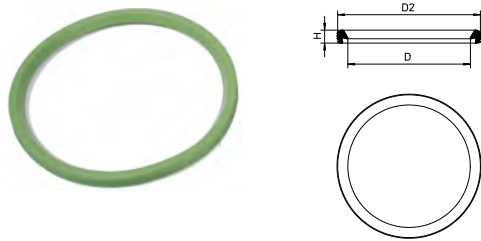
FOR STANDARD USE



Type no.	EAN no.	D	H	D2
801.EPDM.032	5705499403923	32	6.0	39.5
801.EPDM.040	5705499403930	40	7.8	51.7
801.EPDM.050	5705499400038	50	7.8	61.8
801.EPDM.075	5705499400045	75	7.8	87.1
801.EPDM.082	5705499123524	82	8.0	93
801.EPDM.110	5705499400069	110	8.9	124.2
801.EPDM.125	5705499408096	125	10.2	142.3
801.EPDM.160	5705499400076	160	11.5	180.1
801.EPDM.200	5705499410785	200	12.8	223.8
801.EPDM.250	5705499121704	250	19	282
801.EPDM.315	5705499413700	315	20	350

FPM LIP SEALING RING TYPE 801

FOR HIGH TEMPERATURES



Type no.	EAN no.	D	H	D2
801.FPM.040	5705499413458	40	7.8	51.7
801.FPM.050	5705499408102	50	7.8	61.8
801.FPM.075	5705499408119	75	7.8	87.1
801.FPM.082	5705499138788	82	8.0	93
801.FPM.110	5705499408126	110	8.9	124.2
801.FPM.125	5705499410792	125	10.2	142.3
801.FPM.160	5705499408133	160	11.5	180.1
801.FPM.200	5705499410808	200	12.8	223.8
801.FPM.250	5705499121728	250	19	282
801.FPM.315	5705499413717	315	20	350

NBR LIP SEALING RING BLACK/YELLOW TYPE 801

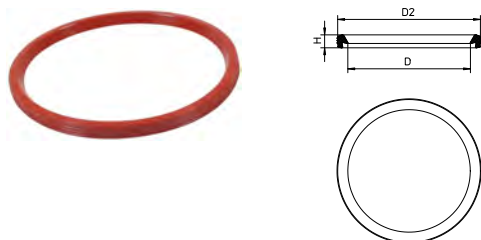
FOR USE WITH OIL



Type no.	EAN no.	D	H	D2
801.NBR.040	5705499413182	40	7.8	51.7
801.NBR.050	5705499400106	50	7.8	61.8
801.NBR.075	5705499400113	75	7.8	87.1
801.NBR.082	5705499138771	82	8.0	93
801.NBR.110	5705499400120	110	8.9	124.2
801.NBR.125	5705499410815	125	10.2	142.3
801.NBR.160	5705499400137	160	11.5	180.1
801.NBR.200	5705499410822	200	12.8	223.8
801.NBR.250	5705499121711	250	19	282
801.NBR.315	5705499413724	315	20	350

SI LIP SEALING TYPE 801

FOR USE IN FIRE-APPROVED PRODUCTS

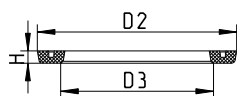


Type no.	EAN no.	D	H	D2
801.SI.040	5705499413199	40	7.8	51.7
801.SI.050	5705499408140	50	7.8	61.8
801.SI.075	5705499408157	75	7.8	87.1
801.SI.110	5705499408164	110	8.9	124.2
801.SI.125	5705499138795	125	10.2	142.3
801.SI.160	5705499408171	160	11.5	180.1

Sealing rings

EPDM SEALING RING TYPE 804

FOR USE IN OLD ACCESS PIPES PRODUCED BEFORE 2002



Type no.	EAN no.	H	D2	D3
804.REN.075	5705499400175	5	80	70
804.REN.110	5705499400182	5	115	105
804.REN.160	5705499400199	5	165	155

MANUAL PIPE CUTTER

Cutting is done by a special disc cutter, which cuts and grips at the same time.

N.B.: Do not cut fittings.



Type no.	EAN no.	Designation
006.050.110	5705499000061	Manual pipe cutter (40 - 110 mm)
006.125.200	5705499001020	Manual pipe cutter (110 - 200 mm)
006.200.315	5705499123531	Manual pipe cutter (200 - 315 mm)
006.000.005	5705499000023	Spindle for 006.050.110
006.000.000	5705499000016	Cutting disc for 006.050.110
006.000.001	5705499001068	Cutting disc for 006.125.200 & 006.200.315

ELECTRICAL PIPE CUTTER

Cutting time:
Seconds.

Changeover time:
Changeover from one cutting disc to another can be effected within a matter of seconds.

Cutting quality:
The cutting motion has been developed to produce a bevelled leading edge to cut ends. As a result only the application of BLÜCHER jointing lubricant is required prior to jointing cut ends.

Power supply:
110 Volt/Min 2 kVA/60 Hz or 220 Volt/50 Hz.

Pipe diametres:
50-160 mm

N.B.: Do not cut fittings.



Type no.	EAN no.	Designation
800.050.160	5705499400021	Electrical pipe cutter 220 V
800.050.160 GB	5705499000184	Electrical pipe cutter 110 V, 16 A
800.050.160 US	5705499000191	Electrical pipe cutter 110 V, USA plug
800.030.006	5705499400014	Cutting disc
006.050.160	5705499124132	Support base for electrical pipe cutter

CUTTING OIL/JOINTING LUBRICANT

Jointing lubricant is applied to make jointing a simple action. After a few days the lubricant will dry out and lose its lubricity making subsequent demounting of a joint difficult. If subsequent demounting of joints can be envisaged then we can supply a silicone based lubricant that will not dry out. BLÜCHER jointing lubricant is based on a mild and harmless liquid detergent that is biologically degradable. BLÜCHER cutting oil is recommended for use with BLÜCHER® EuroPipe pipe cutters.



Type no.	EAN no.	Designation
007.000.000	5705499000078	Atomizer
007.100.050	5705499000085	Jointing lubricant 0.5 L
007.500.050	5705499000092	Cutting oil 0.5 L

ASSEMBLY TOOL



Type no.	EAN no.	Designation
806.000.160	5705499124149	For pipes D=160mm
806.000.200	5705499123500	For pipes D=200mm
806.000.250	5705499124156	For pipes D=250mm

DIMPLING JAWS

FOR PRESSING PROJECTIONS ON PIPES



Type no.	EAN no.
800.200.001	5705499403978

BLÜCHER® EuroPipe

BLÜCHER® Channel

BLÜCHER® Drain

BLÜCHER®

A **WATTS** Brand

T: +45 99 92 08 00 • export@blucher.com • blucher.com

© 2018 blucher.com